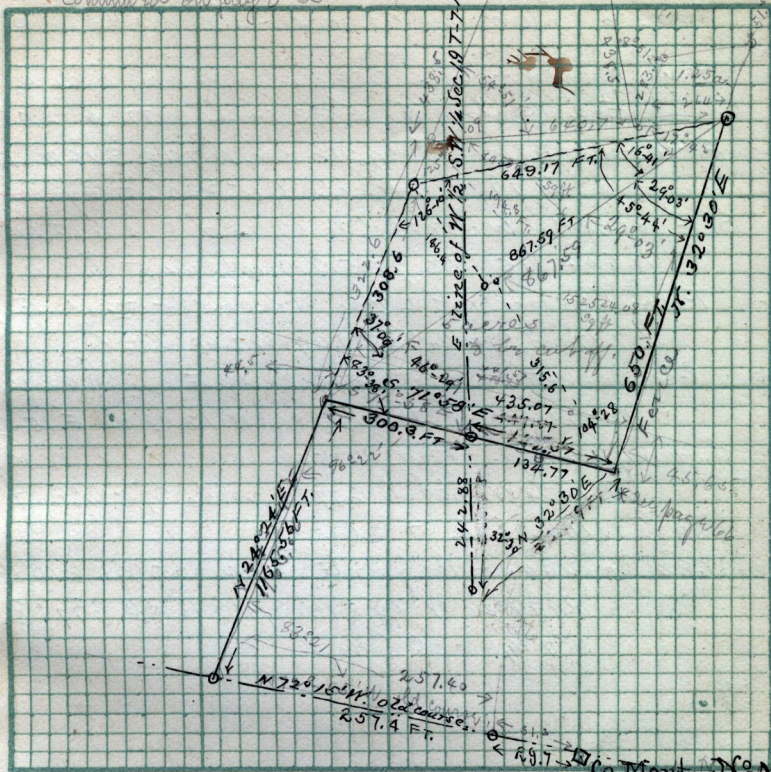


Continued on page 65

57

GRAND  
N.E. Co.



Scale: ..... Chains per inch.

Simon Alvord Patent

Copy of deed from Charles Emery to Dec 5-1871. T-341, Pt 11, E 1/4 Sec 30  
 T-7-N-R-1-W. Proj. 7.20 ch N. of N. E. cor of 13.04 S 1/2 N. thence N 77° W  
 7.54 ch S 1/2 W 16.97 ch S 79° 1/2 E 7.55 ch N 11° E 16.53 ch to beg  
 12.05 a

Also copy of deed from Alvord to Geo. Bennett et al.  
 Dec 5-1871 T-340 - Pt 11, E 1/4 Sec 30 T-7-N-R-1-W. Proj. 7.05  
 ch N. of S. E. cor. N 11° E 10.4° W 79° 1/2 N 15.7° ch S 1/2 W 13. ch E 15.50  
 ch to beg. 18.05 a

see Page 52